

Silent series

interpreter booths

The highest ISO standards and requirements, indicated by users, have resulted in the Audipack "SILENT Series" Interpreter booths. The Silent Series consists of three versions, the Silent 6300, the Silent 9300 and 9500. All versions are fully transportable.

The **Silent Series** are

easy and **quick** to mount

For the best interpretations, silence is required.

The best solution is an Audipack interpreter booth.



In the developing process of these booths, Audipack has paid full attention to a combination of requirements, i.c. flexibility, weight, good looking high quality materials, ease of use and durability.

The scratch-resistant surface finishing in combination with anodised aluminium frames gives an attractive and professional appearance. Safety glass (6 mm) is used for the window-elements (plexiglass windows are optional).

The Silent Series are easy and swift to mount. One person can do the job by using a hex key. The connection of one element with another is achieved by using special locks.

All elements/panels are interchangeable, so there is no difficulty to adapt the construction to local conditions. Even the door can be placed on every side. The roof elements are connected to each other in the same way as the wall elements, resulting in a safe and solid construction.

- ▲ *Panoramic view windows*
- ▲ *Advanced cable management*
- ▲ *Quick installation*
- ▲ *ISO 4043 approved*

All the Audipack interpreter booths are officially tested!



6300 SILENT SERIES, ISO 4043

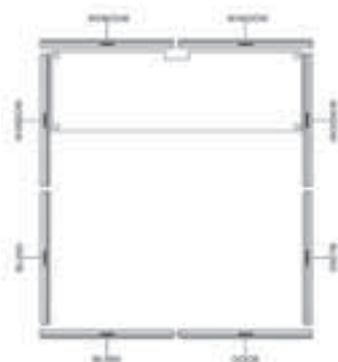
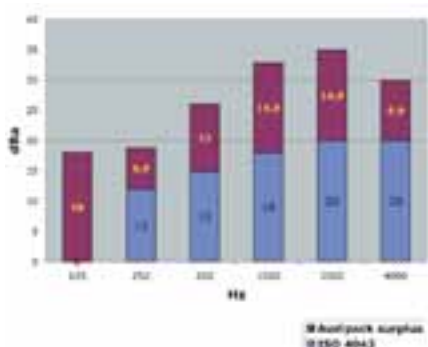


Ref.	P1483
External dimensions in mm	W 1720 x D 1720 x H 2280 excl. ventilation
Weight incl. safety glass and table	340 Kg
Colour	Light grey (approx. RAL 7042)
Sound insulation capacity	Better than ISO 4043 According to DIN 56924*
Number of booth parts incl. table and floor	13
Table dimensions in mm	1600 x 500
Including floor	yes



* DIN 56924 approved only when the optional double glass is mounted

Silent series sound insulation capacity



Adjustable feet



Ventilation



NEW

Back view



Extended 6300 booth



9300-MK II, ISO 4043, PERFECT RENTAL SOLUTION

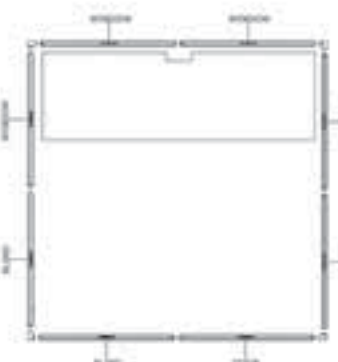
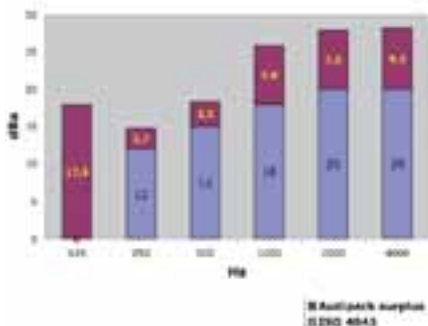
NEW



Ref.	P4302
External dimensions in mm	W 1682 x D 1682 x H 2041 excl. ventilation
Weight incl. safety glass and table	210 Kg
Colour exterior	Light grey (approx. RAL 7042)
Colour interior	Dark grey and white
Sound insulation capacity	Better than ISO 4043
Number of booth parts incl. table	11
Table dimensions in mm	1600 x 500
Including floor	no



Silent series sound insulation capacity



Cable duct



Ventilation



NEW

Ref.	P4019
Type	1 person booth
External dimensions in mm	W 814 x D 1682 x H 2041 excl. ventilation
Weight incl. safety glass and table	150 Kg

9300, CLASSIC INTERPRETER BOOTH



Ref.

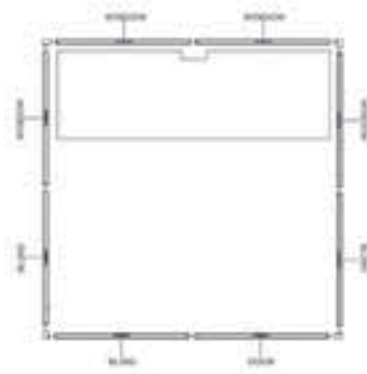
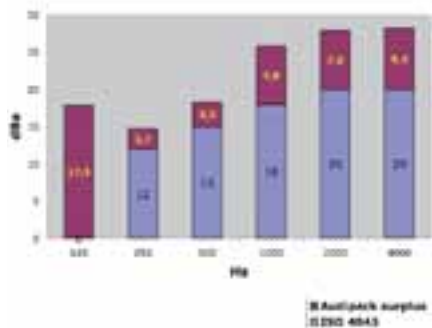
P1481

External dimensions in mm
 Weight incl. safety glass and table
 Colour exterior
 Colour interior
 Sound insulation capacity
 Number of booth parts incl. table
 Table dimensions in mm
 Including floor

W 1682 x D 1682 x H 2041
 210 Kg
 Light grey (approx. RAL 7042)
 Dark grey and white
 Better than ISO 4043
 11
 1600 x 500
 no



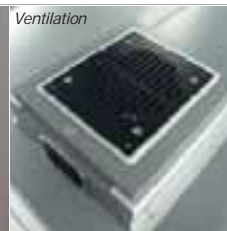
Silent series sound insulation capacity



Cable hide away



Ventilation



9400 SILENT SERIES, LIGHT WEIGHT VERSION



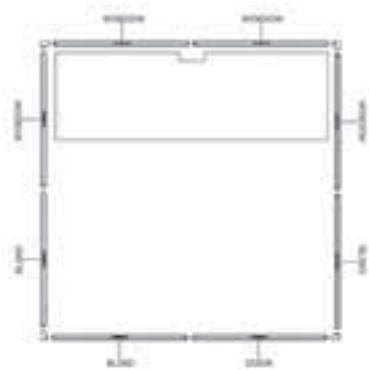
Ref.

P4301

External dimensions in mm
 Weight incl. table
 Colour exterior
 Colour interior
 Number of booth parts incl. table
 Table dimensions in mm
 Including floor

W 1682 x D 1682 x H 2041 excl. ventilation
130 Kg
 Light grey (approx. RAL 7042)
 Dark grey and white
 11
 1600 x 500
 no

LIGHT WEIGHT VERSION



Cable duct



Ventilation



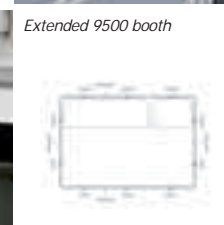
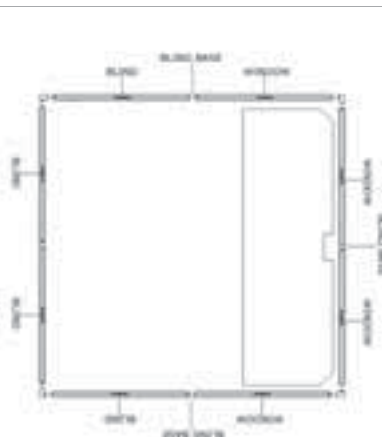
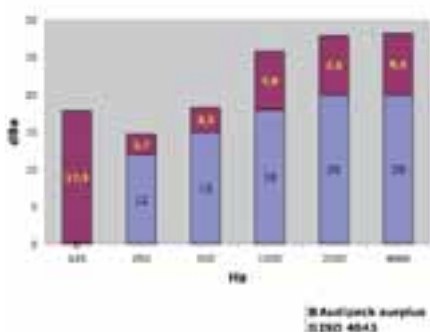
9500 SILENT SERIES, ISO 4043, VERY COMPACT IN TRANSPORT



Ref.	P1482
External dimensions in mm	W 1682 x D 1682 x H 2041
Weight incl. safety glass and table	210 Kg
Colour exterior	Light grey (approx. RAL 7042)
Colour interior	Dark grey and white
Sound insulation capacity	Unofficially ISO 4043
Number of booth parts incl. table	14
Table dimensions in mm	1600 x 500
Including floor	no



Silent series sound insulation capacity



Silent series interpreter booths

ACCESSORIES

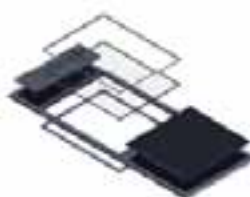
FLIGHTCASES

Transport your interpreter booth nice and safe in a Audipack flightcase.



Ref.	5604/5887	15645	9749	17556	17495	8969
Suitable for Booth	6300	9300	9300	9300 WE	9300 1P	9500
Description	Set of 2	Front loader	Top loader	Front loader	Front loader	Front loader (standing model)

DOUBLE GLASS, DIN 56924



The 6300 interpreter booth is standard ISO 4043 and DIN 56924 approved when the optional double glass is mounted

Ref.	P4364	P4365
Suitable for Booth	Silent 6300 (P1483)	P4000 (single extension for Silent 6300 booth)

ASSEMBLY AID



Ref.

P1866

TRANSPORT CART



Ref.

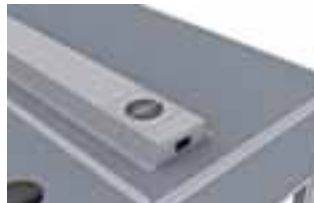
P1769

VENTILATION UNITS

Ventilation A

Ventilation B

NEW



Ref.
Suitable for Booth
Dimensions in mm

P4320
6300, 9300 MK II
W 1490 x D 204 (240) x H 85 mm

P4321
9300 MK II, 9400, 9500
W 274 x D 257 x H 166 (182) mm

EXTENSION SETS



Extension sets to extend an interpreter booth from 2 persons to 3 persons booth. Combine several extension sets.



1 roof part
1 front part
1 back part
1 floor part (6300 only)
1 table extension

Ref.
Suitable for Booth

P4000
6300

P4304
9300 MK II

P4303
9400

P4025
9500

PODIUM, FOR RENTAL PURPOSES, EASY DETACHABLE

NEW



Ref.
Platform dimension in mm
Product dimensions in mm

P5660
W 1690 x D 2275
W 1770 x D 2345 x H 450